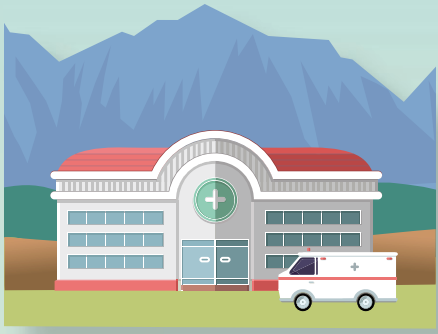


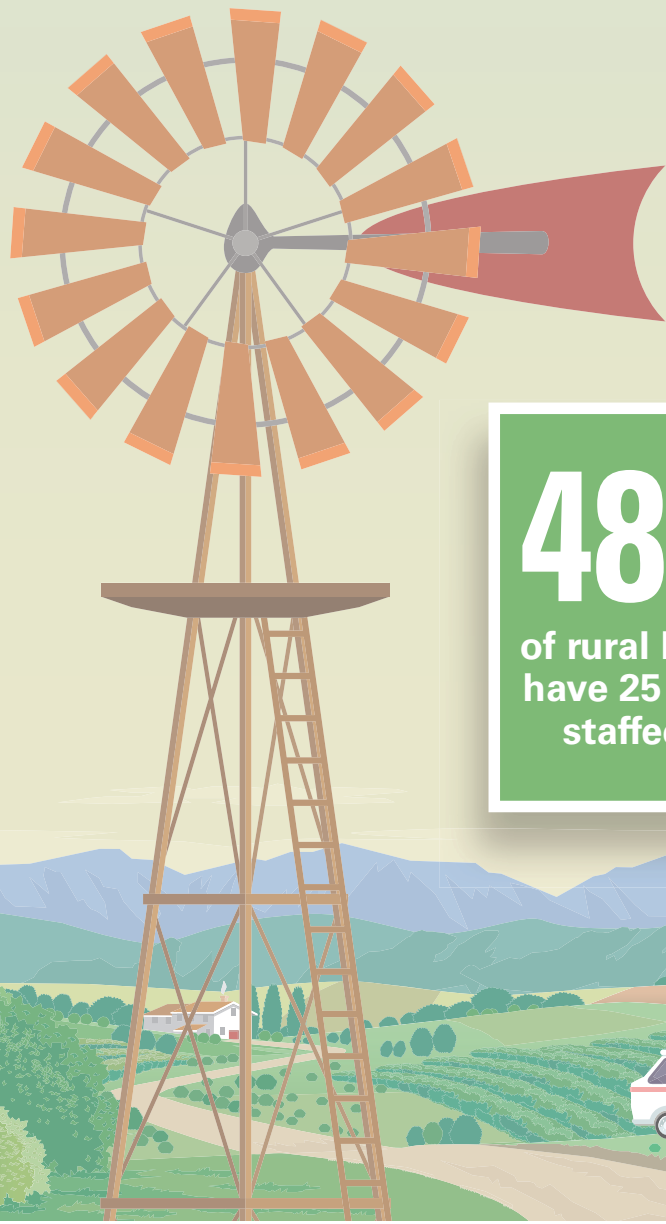
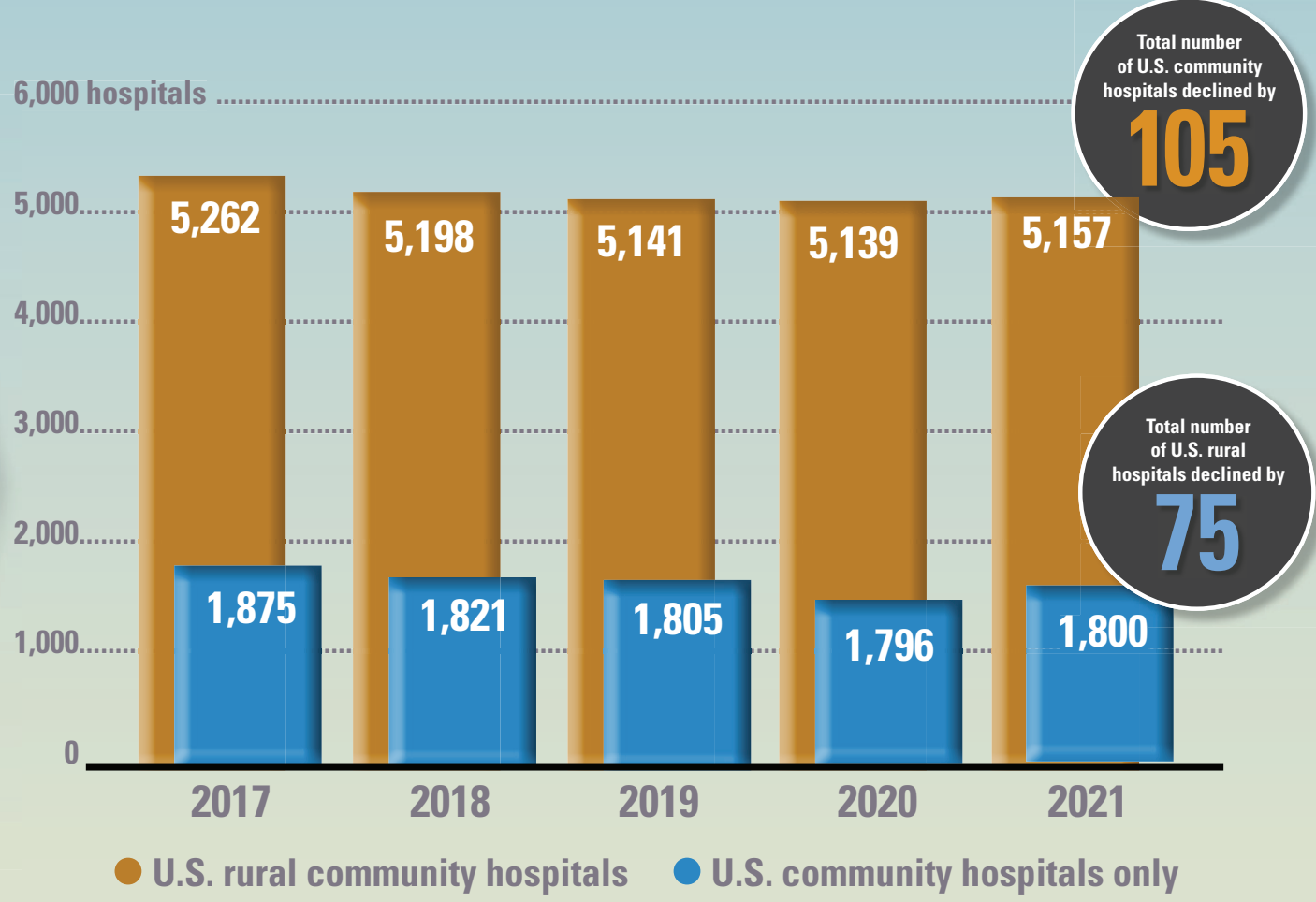
# FAST FACTS | U.S. Rural Hospitals



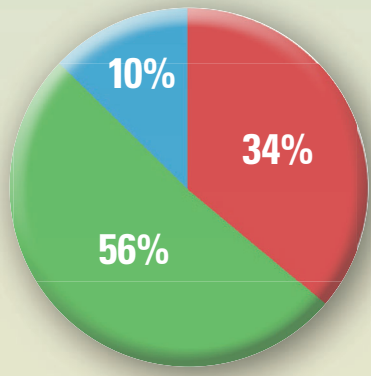
## IS MY HOSPITAL RURAL?

Rural hospitals are those not located within a metropolitan area designated by the U.S. Office of Management and Budget and the Census Bureau. Community hospitals are nonfederal, acute care hospitals open to the general public. For alternate rural definitions, see <https://www.ruralhealthinfo.org/am-i-rural/help#classification>.

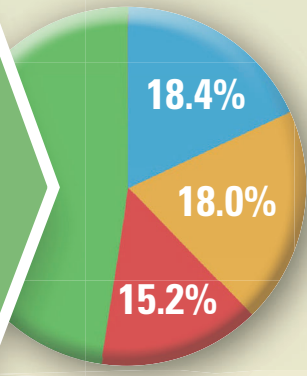
**71%**  
of the decline in the number of U.S. community hospitals between 2017 and 2021 were **RURAL HOSPITALS**



**48.4%**  
of rural hospitals have 25 or fewer staffed beds



**U.S. rural community hospitals, by ownership type, 2021**  
 ■ State and local government (612 total)  
 ■ Nonprofit (1,008 total)  
 ■ Investor-owned, for-profit (180 total)



**U.S. rural community hospitals, by bed size, 2021**  
 ■ Up to 25 beds (871 total)  
 ■ 26-50 beds (332 total)  
 ■ 51-100 beds (324 total)  
 ■ 101 beds or more (273 total)

